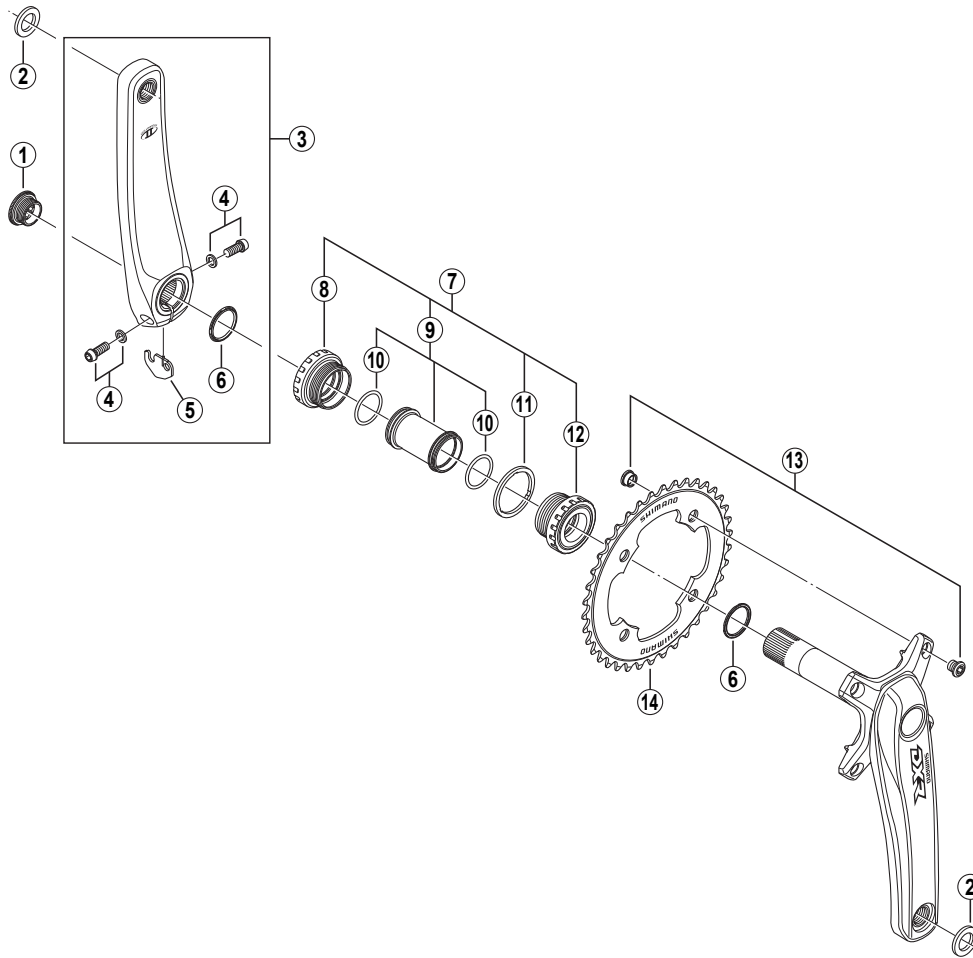


# DXR Front Chainwheel

## FC-MX70

## SM-CR80



• Bolt circle diameter: 104 mm

ITEM NO.	SHIMANO CODE NO.	DESCRIPTION	INTERCHANGEABILITY	
			FC-M800-1	FC-M805-1
1	Y-1E5 11000	Crank Arm Fixing Bolt	A	A
2	Y-1GZ 98010	Pedal Washer (2 pcs.)	A	A
3	Y-1HE 98010	Left Hand Crank Arm 165 mm	B	B
	Y-1HE 98020	Left Hand Crank Arm 170 mm	B	B
	Y-1HE 98030	Left Hand Crank Arm 175 mm	B	B
	Y-1HE 98040	Left Hand Crank Arm 180 mm	B	B
4	Y-1F8 98010	Clamp Bolt (M6 x 19) & Washer	A	A
5	Y-1FA 98060	Plate	A	A
6	Y-1F3 16000	Ring	A	A
7	Y-1HE 98050	Adapter Unit		
8	Y-1FU 98090	Left Hand Adapter (B.C.1.37" x 24T) English Thread	A	A
9	Y-1HE 98060	Inner Cover & O-Ring		
10	Y-1TF 21000	O-Ring	A	A
11	Y-1F8 13000	Spacer (2.5 mm)	A	A
12	Y-1FU 98100	Right Hand Adapter (B.C.1.37" x 24T) English Thread	A	A
13	Y-1E5 98040	Gear Fixing Bolt (M8 x 7) & Nut (4 sets)	A	A
*	I-SMCR80A4	Chainring 34T (Black)	A	A
*	I-SMCR80A8	Chainring 38T (Black)	A	A
*	I-SMCR80B1	Chainring 41T (Black)	A	A
* 14	I-SMCR80B2	Chainring 42T (Black)	A	A
*	I-SMCR80B3	Chainring 43T (Black)	A	A
*	I-SMCR80B4	Chainring 44T (Black)	A	A
*	I-SMCR80B6	Chainring 46T (Black)	A	A

A: Same parts.

B: Parts are usable, but differ in materials, appearance, finish, size, etc.

Absence of mark indicates non-interchangeability.

0811-2661A

Specifications are subject to change without notice.

# SHIMANO