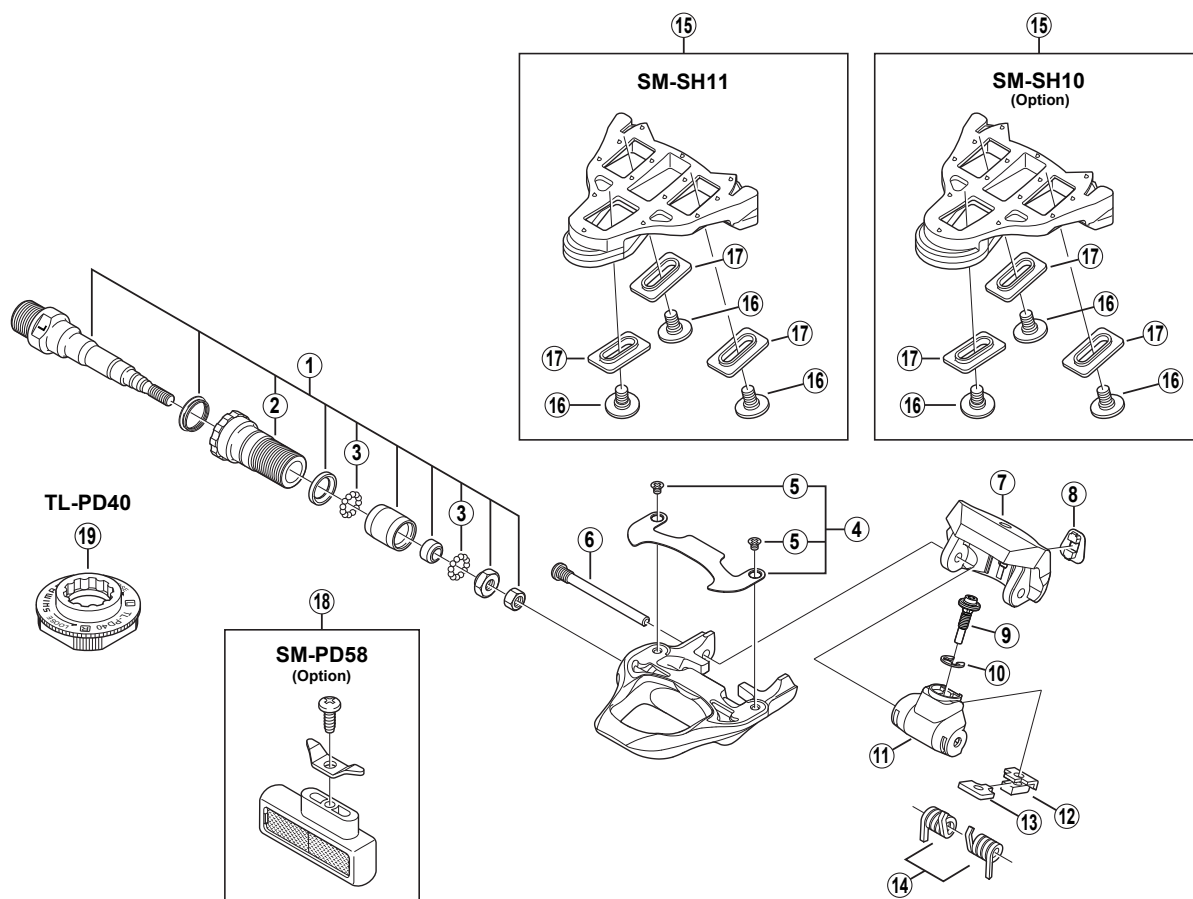


SHIMANO105 SPD-SL Pedals PD-5610



Note: Because the threaded part of the binding pin (item no. ⑥) has been coated with screw locking adhesive, after removal, a new binding pin should be used in place of the old pin.

ITEM NO.	SHIMANO CODE NO.	DESCRIPTION	INTERCHANGEABILITY	
			PD-6620	PD-5600
1	Y-45J 98010	Pedal Axle Assembly (Right / B.C.9/16" x 20T.P.I.)	A	A
	Y-45J 98020	Pedal Axle Assembly (Left / B.C.9/16" x 20T.P.I.)	A	A
2	Y-43Z 13100	Lock Bolt (Right)	A	A
	Y-43Z 14100	Lock Bolt (Left)	A	A
3	Y-41N 98030	Steel Ball (3/32") 62 pcs.	A	A
4	Y-45T 98010	Body Cover & Fixing Screws		
5	Y-42T 05000	Body Cover Fixing Screw	A	
6	Y-45F 05200	Binding Pin		
7	Y-42U 02400	Binding	B	
8	Y-42U 10600	Indicator	B	
9	Y-45F 04000	Spring Adjustment Bolt		A
10	Y-42U 16000	Adjust E-Ring	A	A
11	Y-42U 11800	Spring Cover	B	B
12	Y-45F 09000	Adjust Plate Cover		A
13	Y-45F 08000	Adjust Plate		A
14	Y-42U 98050	Spring (2 pcs.)	A	A
15	Y-42U 98010	SM-SH11 Cleat Set (Self-aligning mode/Pair/M5x8mm)	A	A
	Y-42U 98020	SM-SH10 Cleat Set (Fixed mode/Pair/Option/M5x8mm)	A	A
16	Y-42U 14200	Cleat Fixing Bolt (M5x8mm/1pc.)	A	A
	Y-42U 98060	Cleat Fixing Bolt (M5x13.5mm/6pcs./Option)	A	A
17	Y-42U 15000	Cleat Washer (Black/1pc.)	B	A
	Y-42U 15010	Cleat Washer (Silver/1pc.)	A	B
18	Y-40R 98070	SM-PD58 Reflector Unit (Pair/Option)	A	A
	Y-40R 98080	SM-PD58 Reflector Unit (AS/Pair/Option)	A	A
19	Y-42A 09000	TL-PD40	A	A

A: Same parts.

B: Parts are usable, but differ in materials, appearance, finish, size, etc.

Absence of mark indicates non-interchangeability.

Dec.-2009-2668

© Shimano Inc. W

Specifications are subject to change without notice.

SHIMANO