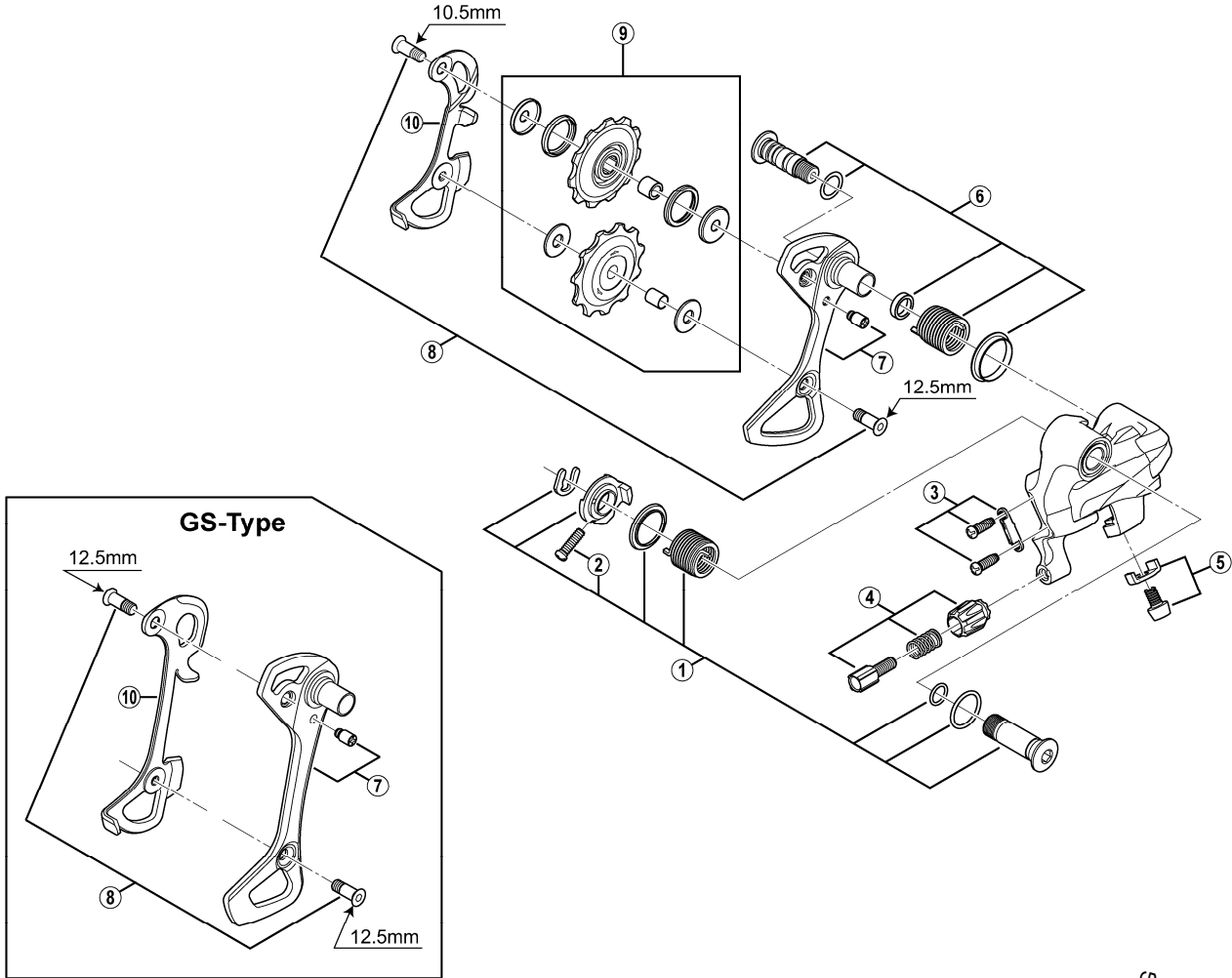


ULTEGRA Rear Derailleur (10-speed)

RD-6700 (SS/GS) Silver Version (Short Cage/Long Cage)

RD-6700-G (SS/GS) Glossy Grey Version (Short Cage/Long Cage)



RD-7900
RD-6600-G
RD-6600
RD-5700-A

ITEM NO.	SHIMANO CODE NO.	DESCRIPTION	INTERCHANGEABILITY			
			RD-7900	RD-6600-G	RD-6600	RD-5700-A
1	Y5X998010	B-Axle Assembly	A			
2	Y55625080	B-Tension Adjusting Screw (M4 x 13.5)	A			A
3	Y5X998020	Stroke Adjusting Screws (M4 x 11.5) & Plate	A	B	B	A
4	Y5X098030	Cable Adjusting Bolt Unit	A	B	B	A
5	Y5W598030	Cable Fixing Bolt (M5 x 8) & Plate	A			A
6	Y5X098050	Plate Axle Assembly	A			
7	Y5X998030	Outer Plate & Plate Stopper Pin (SS-type)	B			
	Y5X998040	Outer Plate & Plate Stopper Pin (GS-type)				
8	Y5X998070	Pulley Bolt 10.5mm & 12.5mm for SS-type		B	B	
	Y5V598140	Pulley Bolt 12.5mm (2 pcs.) for GS-type		A	A	A
9	Y5X998080	Tension & Guide Pulley Set	B			A
* 10	Y5X908100	Inner Plate (SS-type)				
* 10	Y5VG09300	Inner Plate (GS-type)		B	A	

A: Same parts.

B: Parts are usable, but differ in materials, appearance, finish, size, etc.

Absence of mark indicates non-interchangeability.

Mar.-2011-2919A

© Shimano Inc. A

Specifications are subject to change without notice.

SHIMANO